

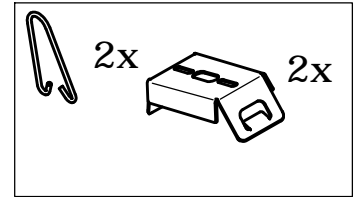
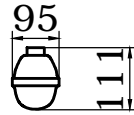
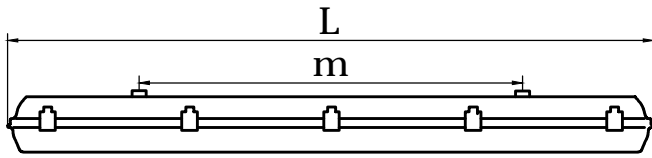
Corp de iluminat cu montaj aparent sau suspendat, tip:
Luminaire with visible mounting or suspended mounting, type:

FIPAD-06 LED
(3F1,5)

Instructiuni de montare si exploatare
Mounting and operating instructions



FIPAD 06 LED 1800LM 15W 1x0,6 (3F1,5)	●	-20°C... ...+35°C	0,96	~230V	15	66	LED	●	0.95	IK0: Corp/Body; IK05: Dispersor/ Diffuser	●	SR EN 60598-1; 2-1
FIPAD 06 LED 4000LM 30W 1x1,2 (3F1,5)			2,3		30							
FIPAD 06 LED 6000LM 46W 1x1,5 (3F1,5)			3		46							



Tip/ Type	L	m
FIPAD 06 LED 1800LM 15W 1x0,6 (3F1,5)	662	350
FIPAD 06 LED 4000LM 30W 1x1,2 (3F1,5)	1272	700
FIPAD 06 LED 6000LM 46W 1x1,5 (3F1,5)	1572	940

1

2

3

4

5

6.1

Cablu traversant preinstalat
wiring pre-installed

6.2 Versiunea/version: 3F1,5

Dezizolare/
Stripping length:

L: 8 mm (0.5 - 1.5 mm²)

7

8

9

Atentie, risc de soc electric!
Toate operatiile de montare si intretinere in exploatare se vor efectua in lipsa tensiunii electrice si numai de catre persoane autorizate!
For installation in line, use only luminaires with wiring pre-installed!; 1,5mm² (Imax=9A)
Sursa de lumină conținută în acest corp de iluminat va fi înlocuită numai de producător sau de agentul său de service sau de o persoană calificată similară.

Caution, risk of electric shock!
All installation and maintenance operations will be performed in absence of operating voltage and only by authorized personnel!
For installation in line, use only luminaires with wiring pre-installed!; 1,5mm² (Imax=9A)
The light source contained in this luminaire shall only be replaced by the manufacturer or his service agent or a similar qualified person.

Acest simbol aplicat pe produs este in conformitate cu Directiva Europeana 2002/96/CE, privind deseurile echipamentelor electrice si electronice rezultate din dezmembrarea produselor uzate si indica faptul ca produsul face obiectul unei colectari separate. Pentru prevenirea distrugerii mediului inconjurator si sanatatii umane, va rugam sa nu eliminati acest produs ca deșeu nesortat. In vederea unei reciclari sigure din punct de vedere al mediului, utilizatorii de echipamente electrice si electronice trebuie sa predea deseurile acestora la punctele de colectare selectiva special amenajate de catre autoritatile administratiei publice locale.
This symbol applied on the product complies with European Directive 2002/96/EC, regarding electrical and electronic waste products resulting from the dismantling and indicates that the product has a separate collection. To prevent the damages on the environment and human health, do not dispose of this product as unsorted waste. For a safe recycling, the electric and electronic equipment end-users must contact the local authorities for details concerning a safe recycling.